

DNA Paternity Testing with Two Mismatches: Our Experience

Belma Jusic*, Amela Pilav, Mirela Dzehverovic, Jasmina Cakar

University of Sarajevo-Institute for Genetic Engineering and Biotechnology, Zmajeva od Bosne 8, Sarajevo, Bosnia and Herzegovina

Received: June 4, 2021; Revised: December 2, 2021; Accepted: January 4, 2022

Abstract

In paternity testing, the adopted rule is to exclude paternity when mismatch at more than two STR loci is observed. Here we present two routine DNA paternity testing cases with two autosomal STR mismatches between the alleged father and female child, where we employed X-STR analysis to confirm or exclude paternity. Mismatches at D16S539 and D18S51 loci in the Case 1 and D8S1179 and FGA loci in the Case 2 were detected using PowerPlex® Fusion System. X-STR analysis using Investigator® Argus X-12 kit yielded one inconsistency at DXS10135 locus between the child and the alleged father in the Case 1, whereas we found a complete match at all 12 analysed X-STR loci in the Case 2. As a result, paternity was confirmed in both cases. Conclusively, this case study indicates that including an additional analysis has a great importance in solving paternity cases with inconclusive results of autosomal STR analysis.

Keywords: kinship testing, STR markers, PowerPlex® Fusion System, Investigator® Argus X-12, mutations

1. Introduction

Nowadays, STR (Short Tandem Repeat) markers represent a powerful tool in the field of forensic-genetic analyses, kinship and parentage testing as well as population-genetic studies (Li *et al.*, 2015; Lee *et al.*, 2017). Consisted of short repetitive units from two to six base pairs in length, STR markers are adequate for forensic analyses of biological samples (Canturk *et al.*, 2014). Their high variability among individuals contributes to highly effectiveness for human identification (Butler, 2011). Unlike unique DNA sequences that exhibit low mutation rate around 10^{-9} nucleotides per generation, STR sequences have higher mutation rate from 10^{-6} to 10^{-2} nucleotides per generation (Fan and Chu, 2007). Besides high heterozygosity, discriminating power, clearly defined repetitive units and precisely determined allelic variants, simple amplification and detection of STR markers make them ideal for forensic analyses (Khalil *et al.*, 2008; Primorac *et al.*, 2014; Gomes *et al.*, 2020). STR markers located on the autosomal, X and Y chromosomes are highly informative, practical and reliable for all kinds of forensic-genetic analyses including parentage testing, what was strongly supported by many population-genetic studies focused on investigating allele frequencies and forensic parameters (such as heterozygosity, power of discrimination, power of exclusion, polymorphic information content, matching probability and typical paternity index) of autosomal STR (Al-Eitan and Tubaishat, 2016; Al-Eitan *et al.*, 2019; Al-Eitan *et al.*, 2020; Pilav *et al.*, 2020; Takic Miladinov *et al.*, 2020) and X-STR loci (Grskovic *et al.*, 2013; Crnjac *et al.*, 2017; Veselinovic *et al.*, 2018) in different populations. Generally, parentage testing follows Mendelian inheritance law, according to which child receives one allele from the

mother and the other allele from the father (Schanfield *et al.*, 2014).

In some cases, spontaneous mutations as non-Mendelian inheritance patterns of alleles lead to allelic mismatch, making paternity or maternity testing case complicated. Fan and Chu (2007) described several different mechanisms of STR mutations, highlighting the strand-slippage replication as a main pattern of STR mutation. Most of reported STR mutations observed in routine parentage testing cases are single-step mutations (Lu *et al.*, 2012; Wojtas *et al.*, 2013), while multi-step mutations occur rarely in a small number of mutation events (Wojtas *et al.*, 2013; Jia *et al.*, 2015; Liu *et al.*, 2015). According to "two exclusion" rule, paternity cannot be excluded when a mismatch at two STR loci between the alleged father and child is observed (Deepak *et al.*, 2019).

In a study of paternity testing reported by Aktheruzzaman *et al.* (2012), two incompatibilities at D2S1338 and vWA loci were observed. Paternity testing was repeated using PowerPlex®16 System and GenePhile G-Plex. Mismatch at vWA locus was observed with PowerPlex®16 System, while two mismatches between the alleged father and child were encountered at D3S1744 and D18S536 loci with GenePhile G-Plex kit. Since the child was a female, paternity was excluded with a set of 13 X-STR markers. In another study of paternity testing by Jha *et al.* (2013), two exclusions between the alleged father and male child were observed at loci D21S11 and D18S51 out of 15 autosomal loci. Then, paternity was excluded after Y-STR analysis using AmpFLSTR™ Yfiler which result showed a match at only three out of 16 loci. As can be seen from the above cited reports, disputed parentage cases not easily solved by routine autosomal STR analysis should be confirmed or excluded by employing an additional analysis (Aktheruzzaman *et al.*, 2012). Analysis of the X-linked STR markers can be performed in disputed

* Corresponding author. e-mail: belma.jusic@hotmail.com.

paternity cases involving female child (García *et al.*, 2017) or disputed maternity (Chen *et al.*, 2009), while the Y-linked STR analysis is appropriate in paternity testing cases with male child (Kayser, 2017). This paper reports two paternity testing cases involving female child, mother and the alleged father, where analysis of autosomal STR markers resulted in single-step mutation in two STR loci, thus X-STR analysis was performed in order to confirm or exclude paternity.

2. Materials and Methods

2.1. Materials

Written informed consents were obtained from each individual in two cases of disputed paternity. In the Case 1, buccal swab samples were taken from female child aged 5 years, mother aged 46 years and the alleged father aged 70 years. Information about the age of the child, mother and the alleged father from the Case 2 was not obtained before taking buccal swab samples. Samples were collected using sterile cotton swabs (CITOSWAB, Shanghai, China) and proceeded to DNA extraction or stored at +4°C until the extraction. Publishing of the results of paternity testing cases was approved by the Ethics Committee of the Institute for Genetic Engineering and Biotechnology, University of Sarajevo (No. 289/20).

2.2. DNA extraction

Genomic DNA was extracted using the QiagenDneasy™ Tissue Kit (Qiagen, 2012) and amplified using the PowerPlex® Fusion System (PROMEGA, Wisconsin, USA) which includes 24 loci (Amelogenin, D3S1358, D1S1656, D2S441, D10S1248, D13S317, Penta E, D16S539, D18S51, D2S1338, CSF1PO, Penta D, TH01, vWA, D21S11, D7S820, D5S818, TPOX, DYS391, D8S1179, D12S391, D19S433, FGA and D22S1045). Also, Investigator® Argus X-12 kit (QIAGEN, GmbH, Hilden, Germany) which includes 13 loci (Amelogenin, DXS10103, DXS8378, DXS7132, DXS10134, DXS10074, DXS10101, DXS10135, DXS7423, DXS10146, DXS10079, HPRTB and DXS10148) was included in analysis. PCR amplification was carried out in GeneAmp™ PCR System 9700 (APPLIED BIOSYSTEMS, USA), following the manufacturer's recommendations. Fragment analysis of PCR products was carried out using an ABI PRISM® 310 Genetic Analyzer (Applied Biosystems, CA, USA). Data were collected

using 310 Data Collection Software. STRs analysis was performed applying GeneMapper™ v. 3.2 software (Applied Biosystems, USA).

2.3. Statistical analysis

Paternity Index (PI) was calculated for each STR locus, as a likelihood ratio generated by comparing probability that the alleged father contributed the obligate allele with probability that randomly chosen man contributed the allele. Combined Paternity Index (CPI) was calculated by multiplying PI values for each locus. Probability of Paternity (PP) was calculated using $PP = CPI / (CPI + 1)$ formula, which represents the probability that the alleged father is a biological father of the child (Schanfield *et al.*, 2014). Observing two inconsistencies between child and the alleged father, possibilities of mutations were taken into account. Mutation Index (MI) values were calculated according to formula $MI = \mu / 2p$ (Brenner, 1998), where μ is the mutation rate for STR locus obtained from Short Tandem Repeat DNA Internet DataBase (<https://strbase.nist.gov/mutation.htm>) and p is a frequency of mutated allele in the population. For statistical analysis of results obtained by X-STR analysis was used FamLinkX v. 2.8 software, including calculation of Likelihood Ratio (LR), Total LR and Probability of Paternity (PP).

3. Results

3.1. Results of autosomal STR analysis

In the Case 1, out of 22 loci tested, a complete match at all autosomal STR loci in the child with the mother was observed. On the other hand, we found two incompatibilities between the alleged father and the child. Allelic variants detected at autosomal STR loci of the child, mother and the alleged father are displayed in Table 1.

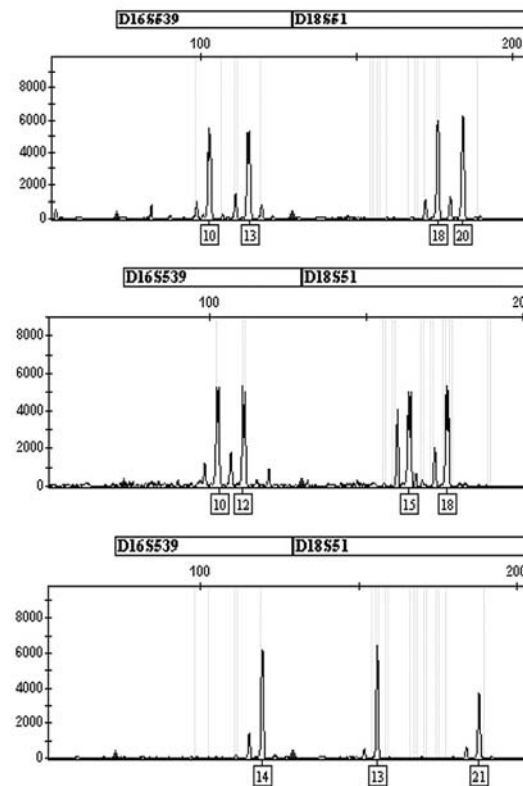
Figure 1 shows genotypes of the child, mother and the alleged father, detected at D16S539 and D18S51 loci. At the D16S539, genotype of the child, mother and the alleged father was found to be 10/13, 10/12 and 14/14, respectively. At the D18S51 observed alleles were 18/20 for the child, 15/18 for the mother and 13/21 for the alleged father. With possibilities of mutation events incorporated into the calculation, CPI and PP values were 647157598 and 99,9999998 %, respectively.

Table 1. Autosomal STR profiles of the child, mother and the alleged father in the Case 1 (mutated alleles underlined>)

Locus	Child	Mother	Alleged father	PI
<i>D3S1358</i>	15/17	14/17	15/16	1,78571
<i>D1S1656</i>	15/17	11/15	12/17	8,34585
<i>D2S441</i>	14/15	11/14	15/15	21,70139
<i>D10S1248</i>	13/16	12/16	13/17	2,17004
<i>D13S317</i>	9/12	12/12	8/9	6,66667
<i>PENTA E</i>	10/13	13/14	10/18	3,03030
<i>D16S539</i>	10/13	10/12	<u>14</u> /14	0,00278 ^a
<i>D18S51</i>	18/20	15/18	13/ <u>21</u>	0,05500 ^b
<i>D2S1338</i>	17/19	17/21	17/19	3,85713
<i>CSFIPO</i>	12/12	10/12	10/12	1,44928
<i>PENTA D</i>	13/13	9/13	10/13	3,33333
<i>TH01</i>	8/8	8/9.3	6/8	4,34783
<i>VWA</i>	15/18	18/18	15/19	4,16667
<i>D21S11</i>	28/30	28/30	30/30	2,66667
<i>D7S820</i>	8/8	8/11	8/12	3,22581
<i>D5S818</i>	11/11	11/12	11/11	2,66667
<i>TPOX</i>	8/11	8/8	11/11	3,84615
<i>DYS391</i>	-	-	10/10	-
<i>D8S1179</i>	12/15	12/13	13/15	6,25000
<i>D12S391</i>	22/23	22/23	22/23	2,41115
<i>D19S433</i>	14/14.2	13/14	13/14.2	19,72387
<i>FGA</i>	24/25	23.2/24	25/25	11,11111
<i>D22S1045</i>	15/16	15/15	16/16	3,03499
<i>AMELOGENIN</i>	XX	XX	XY	-
CPI				647157598
PP (%)				99,9999998

PI=Paternity Index; CPI=Combined Paternity Index;

PP=Probability of Paternity

^aMI (Mutation Index) calculated including possibility of mutation at D16S539 locus^bMI (Mutation Index) calculated including possibility of mutation at D18S51 locus**Figure 1.** Electrophoretogram for the genotypes of the child (upper panel), mother (middle panel) and the alleged father (lower panel) at D16S539 and D18S51 loci in the Case 1

The results of autosomal STR analysis in the Case 2 are listed in Table 2. STR profile of the alleged father matched with the STR profile of the child in 20 out of 22 loci. All alleles of the child at all STR loci monitored were detected in the mother.

At locus D8S1179 alleles 13/16 for the child, 10/13 for the mother and 12/15 for the alleged father were scored (Figure 2). At locus FGA, genotype of the child, mother and the alleged father was found to be 21/21, 21/25 and 20/22, as depicts Figure 3. Absence of obligate paternal allele 16 at D8S1179 and allele 21 at FGA locus indicated to the possibility of mutation. Calculated CPI and PP values including mutation indices at these two loci were 286760481978 and 99,99999999 %.

In above both cases, paternity could not be excluded or confirmed, since it is a practice to exclude paternity with three mismatches observed. Thus, we had taken support of X-linked STR markers in order to get more accurate and conclusive results.

Table 2. Autosomal STR profile of the child, mother and the alleged father in the Case 2 (mutated alleles underlined)

Locus	Child	Mother	Alleged father	PI
<i>D3S1358</i>	17/18	18/18	15/17	2,63158
<i>D1S1656</i>	12/15	12/15	12/15	3,44448
<i>D2S441</i>	11/11.3	11.3/14	10/11	1,65651
<i>D10S1248</i>	14/15	13/15	13/14	1,64393
<i>D13S317</i>	10/11	8/10	11/11	2,77778
<i>Penta E</i>	11/13	9/11	11/13	3,22581
<i>D16S539</i>	11/14	11/13	12/14	25,00000
<i>D18S51</i>	14/18	17/18	14/16	2,32558
<i>D2S1338</i>	19/19	16/19	17/19	3,85713
<i>CSF1PO</i>	9/10	10/13	9/12	10,00000
<i>Penta D</i>	9/16	11/16	9/12	2,04082
<i>TH01</i>	6/9	6/6	9/9	5,12821
<i>vWA</i>	17/18	18/18	17/17	3,63636
<i>D21S11</i>	28/32.2	28/28	30.2/32.2	5,88235
<i>D7S820</i>	10/11	10/11	11/12	1,05263
<i>D5S818</i>	11/13	11/11	10/13	2,85714
<i>TPOX</i>	8/11	8/11	8/8	1,20482
<i>DYS391</i>	-	-	10	-
<i>D8S1179</i>	13/16	10/13	12/ <u>15</u>	0,0029 ^c
<i>D12S391</i>	21/22	18/22	21/23	4,25496
<i>D19S433</i>	12/13	12/14	13/15	2,14850
<i>FGA</i>	21/21	21/25	<u>20/22</u>	0,0083 ^d
<i>D22S1045</i>	11/18	11/18	11/17	3,23897
<i>Amelogenin</i>	XX	XX	XY	-
CPI				286760481978
PP (%)				99,99999999

PI=Paternity Index; CPI=Combined Paternity Index;
PP=Probability of Paternity

^cMI (Mutation Index) calculated including possibility of mutation at D8S1179 locus

^dMI (Mutation Index) calculated including possibility of mutation at FGA locus

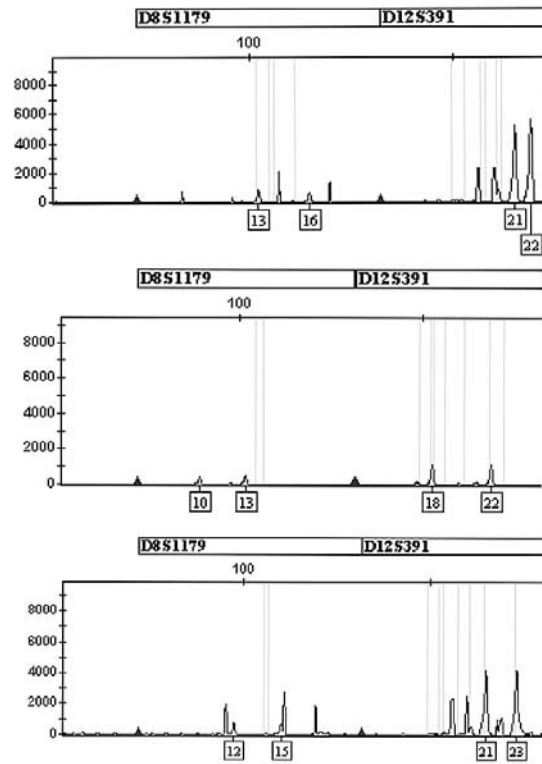


Figure 2. Electrophoretogram for the genotypes of the child (upper panel), mother (middle panel) and the alleged father (lower panel) at D8S1179 locus in the Case 2

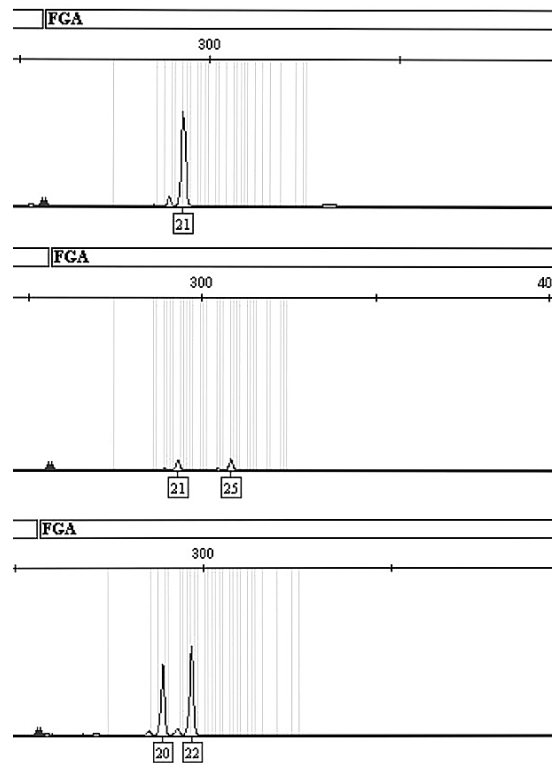


Figure 3. Electrophoretogram for the genotypes of the child (upper panel), mother (middle panel) and the alleged father (lower panel) at FGA locus in the Case 2

3.2 Results of X-linked STR analysis

Table 3 displays observed allelic variants at 12 analysed X-STR loci in the Case 1. There was observed match at all analysed loci between the child and the mother, and match between the child and the alleged father at all analysed loci except DXS10135. Observed alleles for the child and the mother at DXS10135 locus were 24/27 and 20/24, while the alleged father was found to be homozygous for allele 28, as depicted in Figure 4. Total LR (Likelihood Ratio) and PP values calculated including mismatched paternal allele, were 20025200 and 99,9999501%, respectively.

On the other hand, in the Case 2, all alleles of the child at all X-linked STR loci monitored were detected in both the mother and the alleged father. Total LR value was 1331298773, while the PP was 99,9999992 %. The results are summarized in **Table 4**.

Table 3. X-linked STR profile of the child, mother and the alleged father in the Case 1 (mutated allele underlined)

Locus	Child	Mother	Alleged father	LR
<i>DXS10103</i>	18/19	18/19	19	1,67501
<i>DXS8378</i>	11/12	10/11	12	5,61609
<i>DXS7132</i>	15/15	14/15	15	4,68189
<i>DXS10134</i>	35/36	35/36	35	2,24069
<i>DXS10074</i>	8/14	8/14	8	4,58464
<i>DXS10101</i>	27.2/29.2	29.2/30	27.2	8,70467
<i>DXS10135</i>	24/27	20/24	<u>28</u>	0,0215162 ^o
<i>DXS7423</i>	14/15	14/14	15	6,51461
<i>DXS10146</i>	40.2/46.2	28/40.2	46.2	207,068
<i>DXS10079</i>	17/20	18/20	17	9,21573
<i>HPRTB</i>	12/12	12/12	12	2,57443
<i>DXS10148</i>	18/24.1	18/28.1	24.1	7,38388
<i>Amelogenin</i>	XX	XX	XY	-
Total LR				20025200
PP (%)				99,9999501

LR=Likelihood Ratio; PP=Probability of Paternity

^oMI (Mutation Index) calculated including possibility of mutation at DXS10135 locus

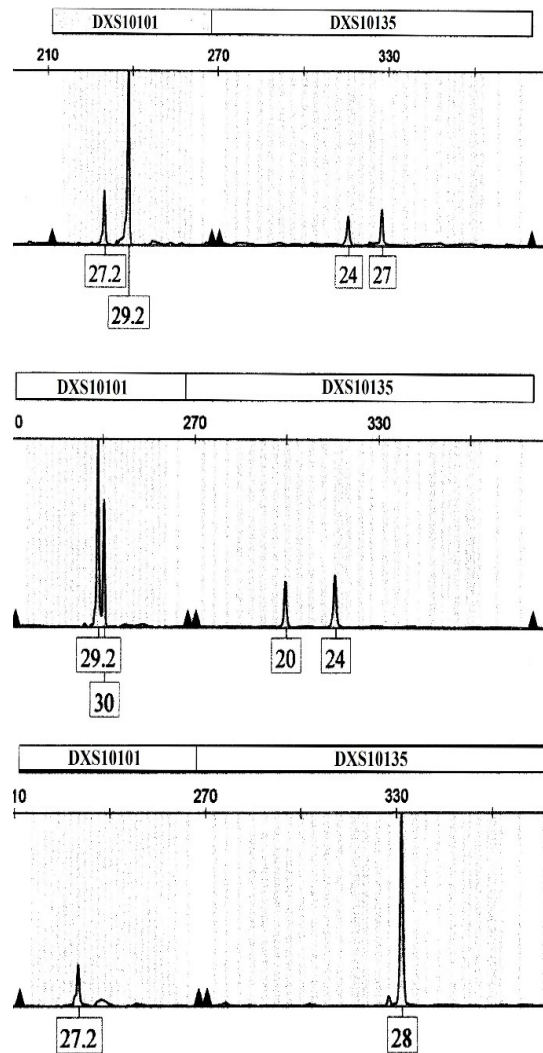


Figure 4. Electrophoretogram for the genotypes for the child (upper panel), mother (middle panel) and the alleged father (lower panel) at DXS10135 locus in the Case 1

Table 4. X-linked STR profile of the child, mother and the alleged father in the Case 2

Locus	Child	Mother	Alleged father	LR
<i>DXS10103</i>	16/18	16/19	18	5,798
<i>DXS8378</i>	12/12	10/12	12	1,952
<i>DXS7132</i>	13/13	13/14	13	3,696
<i>DXS10134</i>	35/36	35/36	36	2,214
<i>DXS10074</i>	16/18	16/19	18	5,671
<i>DXS10101</i>	32/33	28/32	33	19,33
<i>DXS10135</i>	18/28	22/28	18	15,36
<i>DXS7423</i>	14/14	14/16	14	3,629
<i>DXS10146</i>	27/28	28/28	27	7,521
<i>DXS10079</i>	17/19	17/20	19	4,336
<i>HPRTB</i>	11/14	11/13	14	9,238
<i>DXS10148</i>	18/25.1	24/25.1	18	7,809
<i>Amelogenin</i>	XX	XX	XY	-
Total LR				1331298773
PP (%)				99,99999992

LR=Likelihood Ratio; PP=Probability of Paternity

4. Discussion

In this case study, two cases of routine DNA trio paternity testing with two inconsistencies between the child and the alleged father at autosomal STR loci were presented. The initial analysis was carried out using the PowerPlex® Fusion System (PROMEGA, Wisconsin, USA), which is routinely used in our laboratory. Typing of 22 autosomal STR loci revealed mismatches at D16S539 and D18S51 loci in the Case 1, and at D8S1179 and FGA loci in the Case 2. Within standard paternity testing procedure, paternity is excluded when more than two mismatches have been observed at all analysed loci, whereas the possibility of mutations must be included into account for calculation of CPI (Combined Paternity Index) and PP (Probability of Paternity) when one or two mismatches have been observed (Akhteruzzaman *et al.*, 2012).

Generally, mutations occur at D16S539, D18S51, D8S1179 and FGA loci more frequently than at the other autosomal STR loci, according to referent Short Tandem Repeat DNA Internet DataBase (<https://strbase.nist.gov/mutation.htm>) and study of mutation rates of autosomal STR loci in Bosnian and Herzegovinian population (Zametica *et al.*, 2018). There are a few factors influencing STR mutations such as repeat number, length and base composition of STR repeat unit and interruptions in STR as well as sex and age of individual. Throughout replication of a repetitive region, incorrect reassociation of DNA strands leads to insertion or deletion of repeat units, which affects allele length. Besides unequal crossing over in meiosis and retrotransposition mechanism (Fan and Chu, 2007), a major STR mutational factor might be strand-slippage during replication, which causes increase or decrease in a repeat number (Qian *et al.*, 2015), generating new allelic variants during cell division.

Therefore, we assumed that inconsistency in the Case 1 at D16S539 locus might be caused by a loss of one repeat from paternal allele 14, what was transmitted to the child as 13. In the same case, allele mismatch, observed at D18S51 locus, can be attributed to a single-step mutation where there was a loss of one repeat from 21 allele, what was transmitted to the child as allele 20. In the Case 2, obligate paternal allele 16 at D8S1179 locus was characterized as resulting from the mutation of allele 15 into allele 16 (a gain of one repetitive unit). Regarding the inconsistency between child and the alleged father at FGA locus, two hypothetical situations can be considered: 1. Child's allele 21 exists by loss of one repeat from allele 22 of the father. 2. Allele 21 was inherited from allele 20 of the father by gain of one repetitive unit.

Mutations detected in both cases were from paternal source, what was supported by the statement that the mutations occur more often in sperm cells compared to the female egg cells (Qian *et al.*, 2015). Other studies have also found that paternal mutations occur more frequently than maternal not only at autosomal STR loci (Huang *et al.*, 2021) but X-linked STR loci as well (Pinto *et al.*, 2020).

Length of repeat unit and rate of slippage are inversely related, which means that the rate of slippage is expected to be higher in dinucleotide than in trinucleotide or tetranucleotide STR units (Chakraborty *et al.*, 1997). On the other hand, D16S539, D18S51, D8S1179 and FGA loci affected with mutations have tetranucleotide units, as well as almost all of autosomal STR loci analysed in these two paternity testing cases.

Since autosomal STR analyses revealed the number of discrepant loci between the alleged father and female child less than three and left these paternity testing cases unsolved, additional X-linked STR analyses using Investigator® Argus X-12 kit (QIAGEN, GmbH, Hilden, Germany) were included for confirmation or exclusion of paternity. Studies proved usability and efficiency of this kit in kinship testing cases (Hering *et al.*, 2015) and population-genetic researches (Crnjac *et al.*, 2017). Analysis of 12 X-STR loci yielded only one mismatch between child and the alleged father, caused by a single-step mutation at DXS10135 locus in the Case 1, and complete matching at all analysed X-STR loci in the Case 2. In both cases, result of X-STR analysis and PP value clearly indicate that the alleged father is a biological father of the child.

Studies conducted by Jia *et al.* (2015) and Qian *et al.* (2015) revealed that paternal age could contribute to the occurrence of mutations. In light of the fact that sperm cells of older men undergo more divisions than the cells of younger men (Fan and Chu, 2007; Qian *et al.*, 2015), it is more likely that mutations will affect older cells. Since the father from the Case 1 was 65 years old at the birth of child, we assume that his age could be the cause of mutations occurred in both autosomal and X-linked STRs. Considering all aforementioned, knowledge about mutation rates and possible mutational processes of different STR loci is important for accurate genetic profiles interpretation (Qian *et al.*, 2015; Hamester *et al.*, 2019). As previously mentioned in the Introduction section, a number of population-genetic studies, focused on evaluating of forensic efficiency parameters of STR markers (Grskovic *et al.*, 2013; Al-Eitan and Tubaishat,

2016; Crnjac *et al.*, 2017; Veselinovic *et al.*, 2018; Al-Eitan *et al.*, 2019; Al-Eitan *et al.*, 2020; Pilav *et al.*, 2020; Takic Miladinov *et al.*, 2020) indicated a high degree of reliability of these markers important for all kinds of forensic-genetic analyses, including kinship and parentage testing. Finally, results from these two cases clearly demonstrate that X-STR markers have the potential to solve parentage cases not easily solved by standard analysis based on autosomal STR markers.

5. Conclusions

This case study emphasizes the importance and usefulness of supplementary analyses in parentage testing cases with inconclusive results obtained by routine autosomal STR analysis. Moreover, we consider that STRs located on the X chromosome might be superior to conventional autosomal STR markers in parentage testing cases involving at least one female individual, regarding the inheritance pattern of these markers. In the future, investigations focused on the advantages of supplementing the autosomal STR loci with X-STR in other kinds of kinship testing involving at least one female individual should be conducted.

Acknowledgment

None.

Conflict of interest

The authors declare that there is no conflict of interest.

References

- Akhteruzzaman S, Majumder AK, Ferdous A and Ali ME. 2012. False paternity with one or two mismatches using commercial STR kits. *Aust J Forensic Sci.*, **44**(3): 253–259.
- Al-Eitan LN and Tubaishat RR. 2016. Evaluation of forensic genetic efficiency parameters of 22 autosomal STR markers (PowerPlex® Fusion system) in a population sample of Arab descent from Jordan. *Aust J Forensic Sci.*, **50**(1): 97-109.
- Al-Eitan LN, Darwish NN, Hakooz NM and Dajani RB. 2019. Assessing the forensic efficiency of the GlobalFiler STR loci among the genetically isolated Chechen subpopulation in Jordan. *Gene*, **720**: 144078.
- Al-Eitan LN, Darwish NN, Hakooz NM and Dajani RB. 2020. Investigation of the forensic GlobalFiler loci in the genetically isolated Circassian subpopulation in Jordan. *Gene*, **733**: 144269.
- Brenner, CH. 1998. Mutations in Paternity. Retrieved 30 May 2021 from <http://dna-view.com/mudisc.htm>
- Butler JM. 2011. **Advanced Topics in Forensic DNA Typing: Methodology**. Academic Press, Elsevier, USA.
- Canturk KM, Emre R, Kınoglu K, Başpınar B, Sahin F and Ozen M. 2014. Current Status of the Use of Single-Nucleotide Polymorphisms in Forensic Practices. *Genet Test Mol Biomarkers*, **18**(7): 455–460.
- Chakraborty R, Kimmel M, Stivers DN, Davison LJ and Deka R. 1997. Relative mutation rates at di-, tri- and tetranucleotide microsatellite loci. *Proc Natl Acad Sci USA*, **94**(3): 1041-1046.
- Chen DP, Tseng CP, Tsai SH, Wang MC, Lu SC, Wu TL, Chang PY and Sun CF. 2009. Use of X-linked short tandem repeats loci to confirm mutations in parentage caseworks. *Clin Chim Acta*, **408**(1-2): 29-33.
- Crnjac J, Ozretic P, Merkas S, Ratko M, Lozancic M, Korolija M, Popovic M and Mrsic G. 2017. Investigator Argus X-12 study on the population of northern Croatia. *Genet Mol Biol.*, **40**(1): 80-83.
- Deepak YK, Vaishali BM, Bhausaheb PM and Krishna VK. 2019. Paternity Disputes– Importance of Y DNA Profiling in Mutation Cases. *J Forensic Sci.*, **12**(1): 555829.
- Fan H and Chu JY. 2007. A brief review of short tandem repeat mutation. *Genomics Proteomics Bioinformatics*, **5**(1): 7-14.
- García MG, Gusmão L, Catanesi CI, Penacino GA and Pinto N. 2017. Mutation rate of 12 X-STRs from investigator Argus X-12 kit in Argentine population. *Forensic Sci Int Genet Suppl Ser.*, **6**: 562–564.
- Gomes I, Pinto N, Antão-Sousa S, Gomes V, Gusmão L and Amorim A. 2020. Twenty Years Later: A Comprehensive Review of the X Chromosome Use in Forensic Genetics. *Front Genet.*, **11**: 926.
- Grskovic B, Zidkova A, Stenzl V, Popovic M, Primorac D and Mrsic G. 2013. Analysis of 8 X-chromosomal markers in the population of Central Croatia. *Croat Med J.*, **54**(3): 238-247.
- Hamester F, da Silva DS, Leboutte A, Motta C and Alho CS. 2019. Slippage mutation rates in 15 autosomal short tandem repeat loci for forensic purposes in a Southeastern Brazilian population. *Electrophoresis*, **40**(21): 2873–2876.
- Hering S, Edelmann J, Haas S and Graser N. 2015. Paternity testing of two female siblings with Investigator Argus X-12 kit: A case with several rare mutation and recombination events. *Forensic Sci Int Genet Suppl Ser.*, **5**:341-343.
- Huang Y, Liu C, Xiao C, Chen X, Han X, Yi S and Huang D. 2021. Mutation analysis of 28 autosomal short tandem repeats in the Chinese Han population. *Mol Biol Rep.*, **48**(6): 5363-5369.
- Jha DK, Rijal JP, Tuladhar BS, Tuladhar BS and Pokharel BR. 2013. Mutations or exclusion: An uncommon parentage assessment case. *Scientific World*, **11**(11): 74-76.
- Jia YS, Zhang L, Qi LY, Mei K, Zhou FL, Huang DX and Yi SH. 2015. Multistep microsatellite mutation leading to father-child mismatch of FGA locus in a case of non-exclusion parentage. *Leg Med.*, **17**(5): 364-365.
- Kayser M. 2017. Forensic use of Y-chromosome DNA: a general overview. *Hum Genet.*, **136**: 624-635.
- Khalil R, Yasin S, Hamad M, Sharieh A and Al-Jaber A. 2008. Virtual Reference Values for STR Genetic Loci Assignment in Forensic Arenas: A Jordanian-Based Study. *Jordan J Biol Sci.*, **1**(2): 73-76.
- Lee HJ, Lee JW, Jeong SJ and Park M. 2017. How many single nucleotide polymorphisms (SNPs) are needed to replace short tandem repeats (STRs) in forensic applications?. *Int J Legal Med.*, **131**(5):1203-1210.
- Li L, Lin Y, Liu Y, Zhu R, Zhao Z and Que T. 2015. A case of false mother included with 46 autosomal STR markers. *Investig Genet.*, **6**:9.
- Liu YX, Zhang WQ, Jia YS, Zhang L, Zhou FL, Mei K and Yi SH. 2015. Multistep microsatellite mutation in a case of non-exclusion parentage. *Forensic Sci Int Genet.*, **16**: 205-207.
- Lu D, Liu Q, Wu W and Zhao H. 2012. Mutation analysis of 24 short tandem repeats in Chinese Han population. *Int J Legal Med.*, **126**(2): 331–335.
- Pilav A, Pojskic N, Kalajdzic A, Ahatovic A, Dzhevherovic M and Cakar J. 2020. Analysis of forensic genetic parameters of 22 autosomal STR markers (PowerPlex® Fusion System) in a population sample from Bosnia and Herzegovina. *Ann Hum Biol.*, **47**(3): 273-283.

- Pinto N, Pereira V, Tomas C, Loiola S, Carvalho FE, Modesti N, Maxzud M, Marcucci V, Cano H, Cicarelli R, Januario B, Bento A, Brito P, Burgos G, Paz-Cruz E, Diez-Juárez L, Vannelli S, Pontes M de L, Berardi G, Furfuro S, Fernandez A, Sumita D, Bobillo C, García MG and Gusmão L. 2020. Paternal and maternal mutations in X-STRs: A GHEP-ISFG collaborative study. *Forensic Sci Int Genet.*, **46**: 102258.
- Primorac D, Schanfield M and Marjanovic D. 2014. Basic Genetics and Human Genetic Variation. In: Primorac D and Schanfield MS (Eds.), **Forensic DNA applications: An interdisciplinary perspective**. CRC Press, Boca Raton, FL, USA, pp. 3-53.
- Qiagen. 2012. QIAmp DNA MiniKit Handbook. Qiagen, Hilden, Germany.
- Qian XQ, Yin C, Ji Q, Li K, Fan HT, Yu YF, Bu FL, Hu LL, Wang JW, Mu HF, Haigh S and Chen F. 2015. Mutation Rate Analysis at 19 Autosomal Microsatellites. *Electrophoresis*, **36**(14):1633-1639.
- Schanfield MS, Primorac D and Marjanovic D. 2014. Forensic DNA Analysis and Statistics. In: Primorac D and Schanfield MS (Eds.), **Forensic DNA applications: An interdisciplinary perspective**. CRC Press, Boca Raton, FL, USA, pp. 55-83.
- Takic Miladinov D, Vasiljevic P, Sorgic D, Axelsson Podovsovnik E and Stefanovic A. 2020. Allele frequency and forensic parameters of 22 autosomal STR loci in a population of 938 individuals from Serbia and comparison with 24 other populations. *Ann Hum Biol.*, **47**(7-8): 632-641.
- Veselinovic I, Vapa D, Djan M, Velickovic N, Veljovic T and Petric G. 2018. Genetic analysis of 12 X-STR loci in the Serbian population from Vojvodina Province. *Int J Legal Med.*, **132**(2): 405-408.
- Wojtas M, Piniewska D, Polańska N, Stawowiak A and Sanak M. 2013. Mutations of microsatellite autosomal loci in paternity investigations of the Southern Poland population. *Forensic Sci Int Genet.*, **7**(3): 389-391.
- Zametica B, Macar S, Kalajdzic A and Pilav A. 2018. Mutation Analysis of Autosomal STR loci Commonly Used in Paternity Testing in Bosnia and Herzegovina. *Genetics and Applications*, **2**(1):14.